

30 TON

WHL3610-100

A 30-ton lifting capacity and short stowed boom length makes the WHL3610-100 ideal for heavy work in the oilpatch. The WHL3610-co100 can be mounted on either a single or double steering axle chassis.

FEATURES

- 36,000 lbs at 10' radius
- 110' sheave height
- 32.2' retracted boom length
- 15,000 lb planetary winch with integral brake
- 4 section fully proportional boom
- Load Moment Indicator (LMI)
- Planetary drive rotation gear box
- A-frame link style main outriggers
- Dual control consoles and platforms

BENEFITS

- High strength box construction, welded booms for maximum strength to weight ratio
- Planetary type winch with integral brake for high efficiency and security
- Standard audible capacity alert system
- Standard audible outrigger warning alarm

OPTIONAL

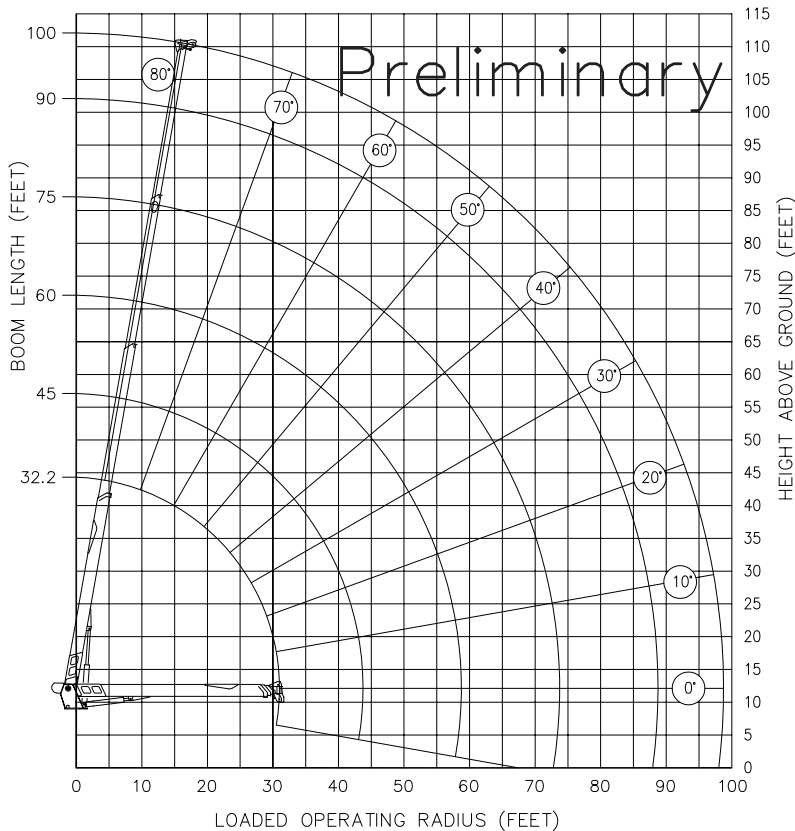
- Snatch block and crane blocks for multi-part line operation
- "Tractor Mount Package" for operating controls from behind the crane
- "Deck Mount" oil reservoir available for Tractor package
- Hydraulic tank heater
- Boom lights



LOAD CHARTS AND SPECIFICATIONS

MAXIMUM RATED LOAD IN LBS. WITH OUTRIGGERS FULLY EXTENDED													
LOADED OPERATING RADIUS	LOADED BOOM ANGLE	RETRACTED BOOM LENGTH	LOADED BOOM ANGLE	BOOM LENGTH	LOADED BOOM ANGLE	BOOM LENGTH	LOADED BOOM ANGLE	BOOM LENGTH	LOADED BOOM ANGLE	BOOM LENGTH	LOADED BOOM ANGLE	EXTENDED BOOM LENGTH	
FEET	<°	32.2'	<°	45 ft	<°	60 ft	<°	75ft	<°	90 ft	<°	100 ft	
10	71	36,000	77	24,000									
12	67	32,000	74	24,100									
15	61	28,200	70	23,700	75	21,500	77	23,500					
20	50	24,500	63	18,800	70	17,000	75	21,000	77	15,400			
25	36	22,000	55	14,200	65	14,100	72	18,500	74	12,400	76	11,600	
30			47	11,100	60	11,300	70	16,600	71	10,400	73	9,600	
35			37	8,900	54	9,100	65	13,000	67	8,900	70	8,200	
40			25	7,300	48	7,400	60	10,800	64	7,600	67	7,000	
45					41	6,100	54	9,000	60	6,300	64	6,100	
50					32	5,100	48	7,500	56	5,300	60	5,400	
55							41	6,400	52	4,400	57	4,600	
60							33	5,250	48	3,700	53	3,900	
65							22	3,900			44	3,100	
70											39	2,600	
75											33	2,100	
80											27	1,700	
85												31	1,400
90												25	1,100

NOTE: Deductions must be made from rated loads for lifting accessories: jibs, overhaul balls, load hooks, snatch blocks and load blocks.



1 PART LINE	4 PART LINE
6,000 LBS	24,000 LBS
2 PART LINE	5 PART LINE
12,000 LBS	30,000 LBS
3 PART LINE	6 PART LINE
18,000 LBS	36,000 LBS

—LIFT LINE RATINGS ARE BASED ON 9/16" 18 X 19 ROTATION RESISTANT WIRE ROPE WITH A MINIMUM BREAKING STRENGTH OF 36800 LBS (SF=5).
 —SHEAVES NUMBERED FROM LEFT TO RIGHT WHEN VIEWED FACING THE CRANE.