

# 8 TON

## WHL810-38/48/58

With an 8-ton lifting capacity and compact design, the WHL810 crane comes in three boom lengths. This crane is suitable for oilfield service work, construction sites, material handling and other applications where space is limited. With a strong compact design, it can be mounted on a variety of single front axle trucks.

### FEATURES

- 16,000 lbs lifting capacity
- 370° non-continuous rotation
- High strength box construction
- Hydraulic sequence valve for boom extension function
- 38', 47' 10", 58' 6" sheave height
- 7,000 lbs planetary winch with brake
- Integral telescoping "A" frame outriggers
- 12' 6" outrigger spread
- Dual operator control stations
- Hydraulic system pressure gauge
- Radio Anti-2-Block system with audio and visual warning and hydraulic lockout of hoist-up function and telescope-out function

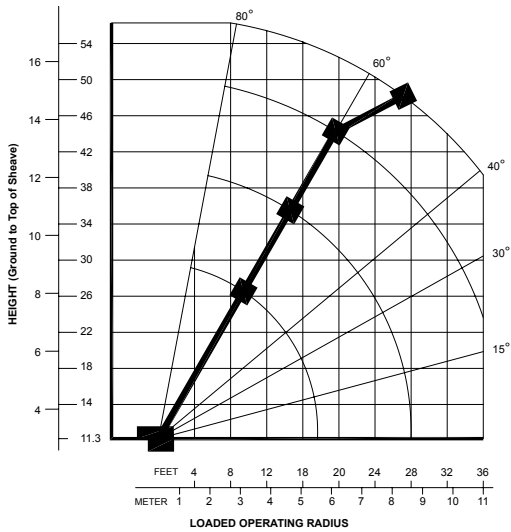
### OPTIONS

- Hydra-Limit overload protection system
- Auxiliary under-frame outriggers with individual controls
- Snatch blocks and crane blocks for multi-part line operation
- Additional 20gpm hydraulic valve for customer installed hydraulic functions



# LOAD CHARTS AND SPECIFICATIONS

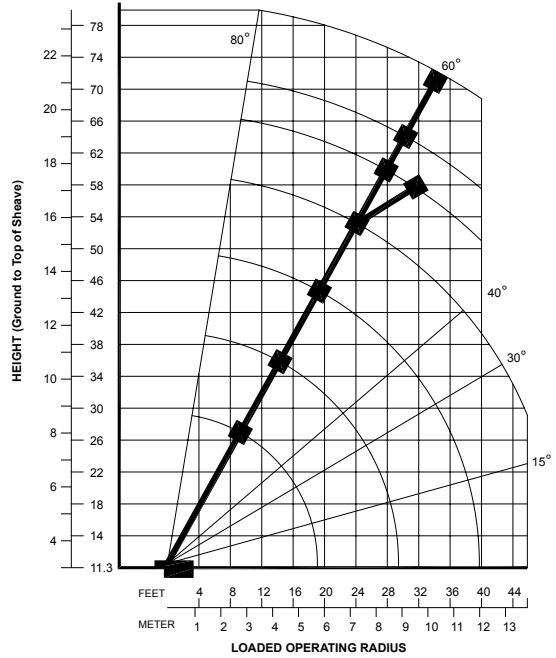
## HL 848



Maximum allowable load for single line is 7600 lbs (3450kg). For heavier loads, use multiple part reeving. One part of line for each 7600 lbs (3450kg).

When 10ft steel jib is on boom, but not being used, deduct as follows from chart loadings:  
 Jib Erected 250lbs 110kg  
 Jib Stowed 100lbs 45kg

## HL 858



Maximum allowable load for single line is 7600 lbs (3450kg). For heavier loads, use multiple part reeving. One part of line for each 7600 lbs (3450kg).

When 10ft steel jib is on boom, but not being used, deduct as follows from chart loadings:  
 Jib Erected 250lbs (110kg)  
 Jib Stowed 100lbs (45kg)

### MAXIMUM RATED LOAD

LOAD RADIUS	FIRST STAGE BOOM		SECOND STAGE BOOM		THIRD STAGE BOOM		10 ft. STEEL JIB AT 30° OFFSET	
	ft	m	lbs	kg	lbs	kg	lbs	kg
4	1.2	16,000	7,260					
5	1.5	13,500	6,120					
6	1.8	12,000	5,440	9,000	4,080			
8	2.4	9,200	4,170	7,500	3,400			
10	3.0	7,700	3,490	6,400	2,900	5,800	2,630	
12	3.7	6,800	3,080	5,400	2,450	4,900	2,220	
14	4.3	6,000	2,720	4,800	2,180	4,300	1,950	3,000 1,360
16	4.9	5,200	2,360	4,300	1,950	3,800	1,720	2,440 1,090
18	5.5			3,900	1,770	3,400	1,540	2,000 910
20	6.1			3,500	1,590	3,100	1,400	1,800 820
22	6.7			3,200	1,450	2,800	1,270	1,600 730
24	7.3			2,900	1,320	2,600	1,180	1,500 680
26	7.9			2,600	1,180	2,400	1,090	1,300 590
28	8.5					2,200	1,000	1,200 540
30	9.1					2,100	950	1,000 450
32	9.7					1,950	880	900 410
34	10.4					1,800	820	750 340
36	11.0					1,650	750	650 290

### MAXIMUM RATED LOAD

LOAD RADIUS	FIRST STAGE BOOM		SECOND STAGE BOOM		THIRD STAGE BOOM		FOURTH STAGE BOOM		22ft STEEL JIB or 10 ft. UNDERSLUNG JIB	
	ft	m	lbs	kg	lbs	kg	lbs	kg	lbs	kg
4	1.2	16,000	7,260							
5	1.5	13,000	5,900							
6	1.8	11,500	5,220	9,000	4,080					
8	2.4	9,100	4,130	7,000	3,170					
10	3.0	7,500	3,400	6,100	2,770	5,500	2,490			
12	3.7	6,500	2,950	5,100	2,310	4,600	2,090	4,000	1,810	2,000 910
14	4.3	5,700	2,590	4,500	2,040	4,000	1,810	3,400	1,540	2,000 910
16	4.9	5,000	2,270	4,000	1,810	3,500	1,590	2,900	1,320	2,000 910
18	5.5			3,600	1,630	3,100	1,410	2,500	1,130	1,900 860
20	6.1			3,200	1,450	2,800	1,270	2,250	1,020	1,750 790
22	6.7			2,900	1,320	2,500	1,130	2,000	910	1,500 680
26	7.9			2,300	1,040	2,100	950	1,700	770	1,000 450
30	9.1					1,800	820	1,400	630	750 340
34	10.4					1,500	680	1,200	540	500 230
36	11.0					1,350	610	1,100	500	450 200
40	12.3							925	420	350 160
44	13.4							775	350	250 110
48	14.6							625	280	200 90