

50 TON TRACTOR

WHL8210-77

With a 50-ton lifting capacity, long reach and a sub-frame suitable for fifth wheel installation, the WHL8210-77 Tractor offers heavy lifting and versatility. Out and down outriggers with independently operated horizontal extension cylinders and vertical jack cylinders, give the operator true stability on uneven surfaces or in tight locations. The fully equipped cab provides the operator with a comfortable working environment in all weather conditions. Mounted on a tandem steer tri-drive rear axle chassis with fifth wheel, this crane is truly capable of heavy lifting and heavy hauling.

FEATURES

- 82,000 lbs at 10' radius (50-ton lifting capacity)
- 77' boom length or 84' tip height (fully extended)
- 4 section 100' fully proportional boom
- 30.5' retracted length
- Continuous rotation
- 15,000 lb, 2 speed grooved drum planetary winch with integral brake for high efficiency and security, includes cable packer.
- Out and down outriggers
- Dual fan oil cooler
- High strength box construction, welded booms for maximum strength to weight ratio
- A2B and LMI system with digital radio weight indicator
- Pre-wired boom and cab for work lights
- Remote Monitoring Video System - two cameras and one in-cab display (view right rear outriggers and winches)
- 40-ton four-sheave crane block (Easy Reeve)

OPTIONS

- 31' Orientable (0°, 15°, 30°) swing around jib, stows on side of boom
- 31' - 51' Orientable (0°, 15°, 30°) swing around jib, stows on side of boom
- Hydraulic tank heater
- Boom lights
- Auxillary winch options, 12,000 lb or 15,000 lb winch
- Two person self levelling man basket
- Air conditioning
- Remote radio crane controls



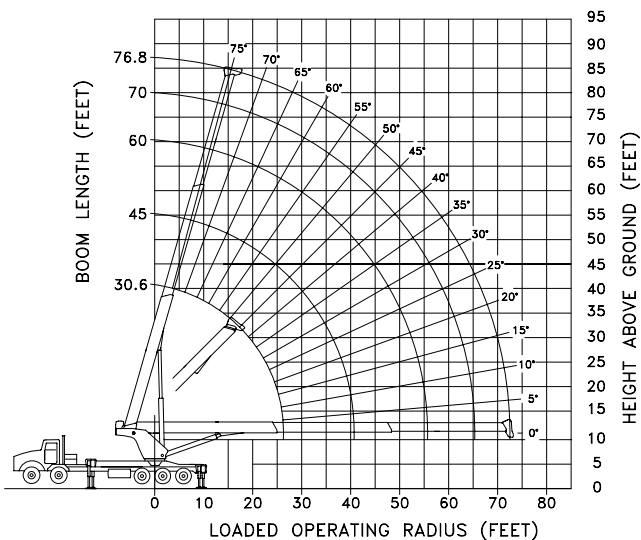
LOAD CHARTS AND SPECIFICATIONS

MAXIMUM RATED LOAD IN LBS. WITH OUTRIGGERS FULLY EXTENDED

LOADED OPERATING RADIUS	LOADED BOOM ANGLE	RETRACTED BOOM LENGTH	LOADED BOOM ANGLE	BOOM LENGTH	LOADED BOOM ANGLE	BOOM LENGTH	LOADED BOOM ANGLE	BOOM LENGTH	LOADED BOOM ANGLE	BOOM LENGTH	LOADED BOOM ANGLE	EXTENDED BOOM LENGTH
FEET	°	30.6'	°	40'	°	50'	°	60'	°	70'	°	76.8'
5	75	100,000										
8	67	89,500										
10	62	82,000	69	61,200	74	56,250						
12	58	73,000	66	61,200	71	56,250	74	50,000				
15	51	63,500	61	59,000	67	52,800	71	45,000	74	36,000		
20	37	47,500	53	47,500	61	42,000	66	38,500	70	31,000	72	28,000
25	16	37,000	43	36,900	54	32,900	61	31,000	65	27,000	68	25,000
30			31	29,300	47	29,000	55	27,500	61	24,000	64	22,000
35			12	23,300	38	23,500	49	23,600	56	22,000	59	19,000
40					28	18,300	43	18,400	51	18,500	55	16,700
45					11	14,700	35	14,800	45	14,900	50	13,400
50							26	12,200	39	12,300	45	11,000
55							10	10,100	32	10,200	40	10,000
60									24	8,600	33	8,700
65									9	7,300	26	7,400
70											15	6,300
	0	1,000	0	1,000	0	1,000	0	1,000	0	1,000	0	1,000

RATINGS ABOVE THE HEAVY LINE ARE BASED ON STRUCTURAL COMPETENCE AND NOT ON MACHINE STABILITY.

NOTE: Deductions must be made from rated loads for lifting accessories: fixed jibs, telescopic jibs, overhaul balls, load hooks, snatch blocks and load blocks.



1 PART LINE 9,000 LBS	2 PART LINE 18,000 LBS	3 PART LINE 27,000 LBS	4 PART LINE 36,000 LBS	5 PART LINE 45,000 LBS
6 PART LINE 54,000 LBS	7 PART LINE 63,000 LBS	8 PART LINE 72,000 LBS	9 PART LINE 81,000 LBS	10 PART LINE 90,000 LBS

LIFT LINE RATINGS ARE BASED ON 5/8" 18 X 19 ROTATION RESISTANT WIRE ROPE