

# 23 TON

## WHL3010-60

Designed as a mid-range crane, the WHL3010-60 is suitable for multiple applications where a 60 ft reach is required. The design shares the popular hydraulic control console and components with our classic WHL 30-ton cranes.

### FEATURES

- 30,000 lbs at 10' radius (23-ton lifting capacity)
- 70' sheave height
- 12,000 lb planetary winch
- Optional continuous rotation
- External drive swing box with eccentric ring backlash adjustment
- Load moment indicator (LMI) and shutdown system available

### BENEFITS

- Two speed winch motor can easily change between high and low speed for precise control and job efficiency
- Large gear teeth prevents gear tooth breakage
- External mount provides easy and instant servicability for maintenance and adjustment
- Digital wireless weight indicator is available to inform the operator what the load is
- LMI can be added and wired directly to the shut down valve to prevent overloading of the crane

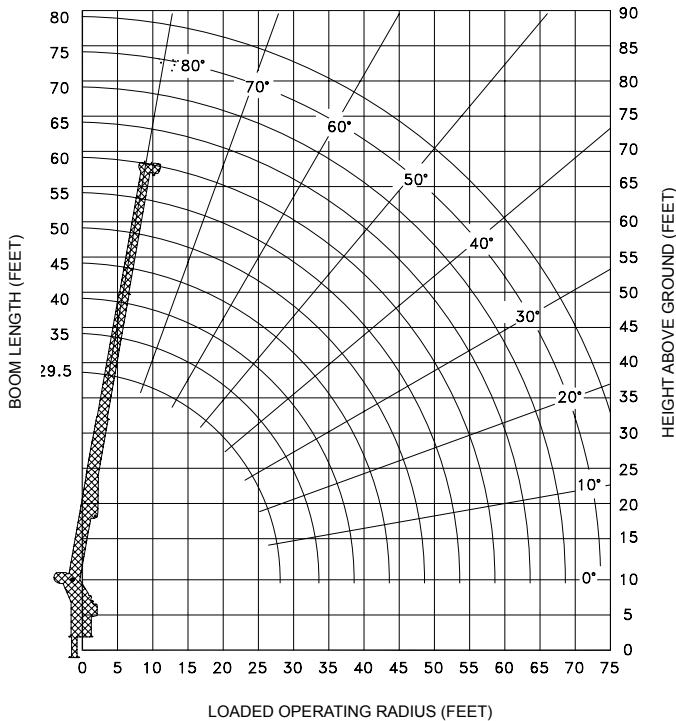


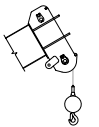
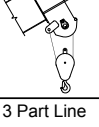
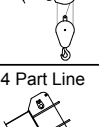

# LOAD CHARTS AND SPECIFICATIONS

MAXIMUM RATED LOAD IN LBS. WITH OUTRIGGERS FULLY EXTENDED										
Loaded Operating Radius	Loaded Boom Angle	Retracted Boom Length	Loaded Boom Angle	Boom Length	Loaded Boom Angle	Boom Length	Loaded Boom Angle	Boom Length	Loaded Boom Angle	Boom Length
ft	°	24ft 6in	°	35 ft	°	45 ft	°	55 ft	°	59ft 6in
10	66	30,000	74	24,000	77	22,000				
12	61	25,000	70	21,000	75	19,000	77	18,000		
15	52	20,000	65	18,000	71	16,000	74	15,000	75	14,000
20	33	15,000	55	13,500	64	12,500	69	12,000	70	11,000
25			44	11,000	56	10,000	63	9,500	65	9,000
30			29	9,000	48	8,000	57	7,500	59	7,500
35					38	6,500	50	6,500	53	6,500
40					25	5,500	43	5,500	47	5,500
45							34	4,500	40	4,500
50							23	4,000	31	4,000
55									20	3,500

Ratings above the heavy line are based on structural competence.  
Ratings below the heavy line are based on machine stability and do not exceed 85% of tipping.

**NOTE:** Deductions must be made from rated loads for lifting accessories: overhaul balls, load hooks, snatch blocks and load blocks.



Maximum Load (lbs) 9/16 Cable	
1 Part Line 	6,000
2 Part Line 	12,000
3 Part Line 	18,000
4 Part Line 	24,000