

# 18 TON

## WHL2110-70/92

With an 18-ton lifting capacity, the WHL2110-70/92 crane comes in two boom lengths. This crane is suitable for oilfield service work, construction sites and other applications. With a strong compact design, it can be mounted on either a single or dual front axle truck.

### FEATURES

- 36,000 lbs lifting capacity
- 375° non-continuous rotation
- High strength, low alloy steel 4-plate construction
- 3 sheave boom tip
- 12,000lbs two-speed winch
- 18' 10 3/4" main outrigger spread, A-frame link style
- Dual control consoles and operator platforms
- 3 section 14/18/25 gpm gear pump
- Radio Anti-2-Block system with audio and visual warning and hydraulic lockout of hoist-up function and telescope-out function

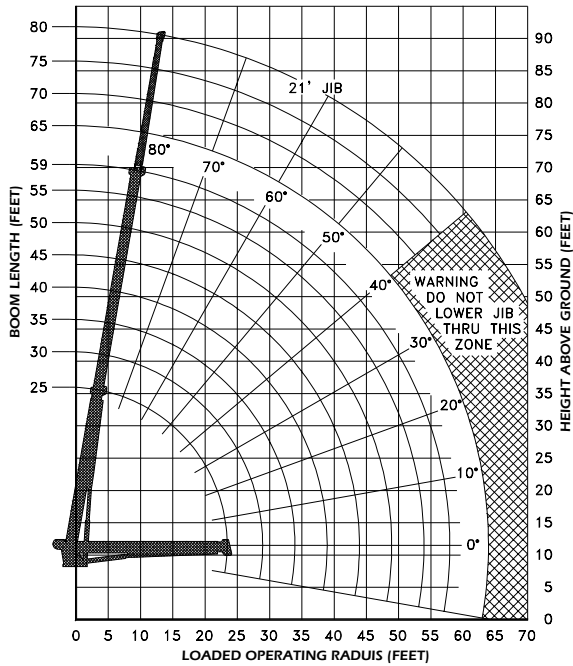
### OPTIONS

- Continuous rotation through swivel, complete with 4 electrical slip rings
- Hydra-Limit overload protection system
- Snatch blocks and crane blocks for multi-part line operation
- Hydraulic Tank Heater (hot water)
- 21' Swing Around Jib
- Digital Radio Weight Indicator
- Boom lights



# LOAD CHARTS AND SPECIFICATIONS

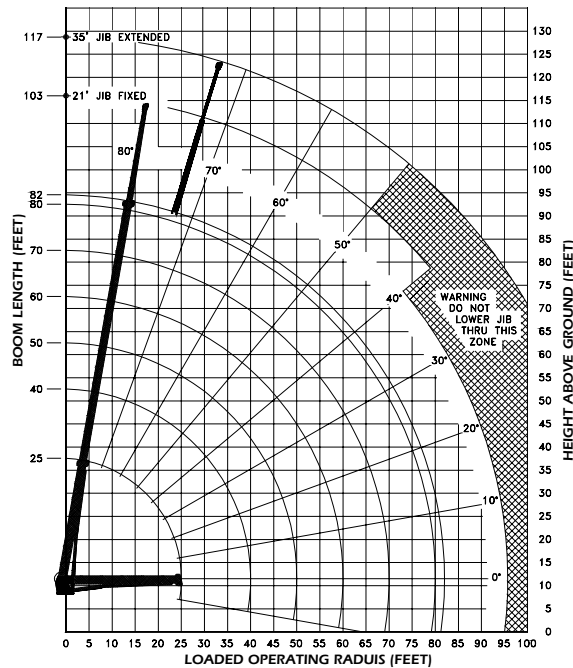
## WHL2110-70



MAXIMUM RATED LOAD IN LBS. WITH OUTRIGGERS FULLY EXTENDED												
Loaded Operating Radius	Loaded Boom Angle	Retracted Boom Length	Loaded Boom Angle	Boom Length	Loaded Boom Angle	Boom Length	Loaded Boom Angle	Boom Length	Loaded Boom Angle	Boom Length	Loaded Boom Angle	21' Jib Erected
ft	°	25 ft	°	35 ft	°	45 ft	°	55 ft	°	59 ft	°	
10	73	24,650	78	23,800								
12	67	21,000	74	19,550	78	18,750	80	17,900				
14	62	18,700	71	16,700	75	15,850	78	15,750	79	15,550	80	5,500
16	57	16,250	67	15,000	73	14,100	76	13,550	77	13,400	78	4,800
18	50	14,450	63	13,320	70	12,450	74	11,950	75	11,750	76	4,300
20	44	13,000	59	11,950	67	11,150	71	10,650	73	10,450	75	3,900
25	36	11,550	55	10,850	64	10,150	69	9,550	71	9,450	71	3,300
30			44	8,750	57	8,200	64	8,150	66	7,900	67	2,700
35			31	7,350	49	7,100	58	6,700	60	6,550	62	2,300
40					39	5,950	51	5,650	55	5,550	58	2,025
45					27	4,900	44	4,900	48	4,750	54	1,800
50							35	4,150	41	4,100	50	1,550
55							24	3,450	33	3,450	46	1,325
60									21	2,900	40	700
Deductions for Stowed Jib			675lbs		500lbs		450lbs		325lbs		300lbs	

**NOTE:** Deductions above the heavy line are based on structural competence and not on machine stability. Deductions must be made from rated loads for lifting accessories: overhaul balls, load hooks, snatch blocks and load blocks.

## WHL2110-92



MAXIMUM RATED LOAD IN LBS. WITH OUTRIGGERS FULLY EXTENDED												
Loaded Operating Radius	Loaded Boom Angle	Retracted Boom Length	Loaded Boom Angle	Boom Length	Loaded Boom Angle	Boom Length	Loaded Boom Angle	Boom Length	Loaded Boom Angle	Boom Length	Loaded Boom Angle	21' Jib Erected
ft	°	25 ft	°	40 ft	°	50 ft	°	60 ft	°	70 ft	°	82 ft
10	70	21,000	77	18,800	80	18,000						
12	66	17,750	74	15,700	77	15,100	80	14,600				
14	60	15,400	71	13,800	75	13,300	78	12,850	80	12,600		
16	55	13,800	68	12,250	73	11,600	76	11,100	78	10,900	80	10,500
18	49	11,800	65	10,900	70	10,200	74	9,800	76	9,600	78	9,200
20	43	10,200	62	9,850	68	9,200	72	8,750	74	8,550	77	8,150
25	19	7,750	53	7,700	61	7,300	67	7,200	71	6,900	73	6,600
30			44	6,200	55	6,150	62	5,800	66	5,600	70	5,250
35			32	4,950	48	4,900	56	4,850	62	4,650	66	4,300
40					39	4,000	50	3,950	57	3,900	62	3,600
45					28	3,300	43	3,250	51	3,200	58	3,050
50							35	2,700	46	2,650	54	2,600
55							25	2,200	40	2,200	49	2,150
60									32	1,950	44	1,800
65									23	1,550	39	1,500
70											33	1,250
75											25	950
80												

**NOTE:** Deductions above the heavy line are based on structural competence and not on machine stability. Deductions must be made from rated loads for lifting accessories: overhaul balls, load hooks, snatch blocks and load blocks.