

# 15 TON

## WHL1810-70

The WHL1810-70 is a mid capacity crane with the reliability, reach and fifth wheel towing capacity of heavier cranes. Designed to be mounted on a single steering axle tractor, the light and manoeuvrable WHL1810-70 is available in Tractor or Deck Mount configurations.

### FEATURES

- 30,000 lbs lifting capacity
- 69' sheave height
- Continuous rotation
- 12,000 lb single planetary winch
- High strength box construction and welded booms for maximum strength to weight ratio
- A-frame link style main outriggers
- 18' 5" extended main outrigger spread
- Dual control consoles and operator platforms

### OPTIONS

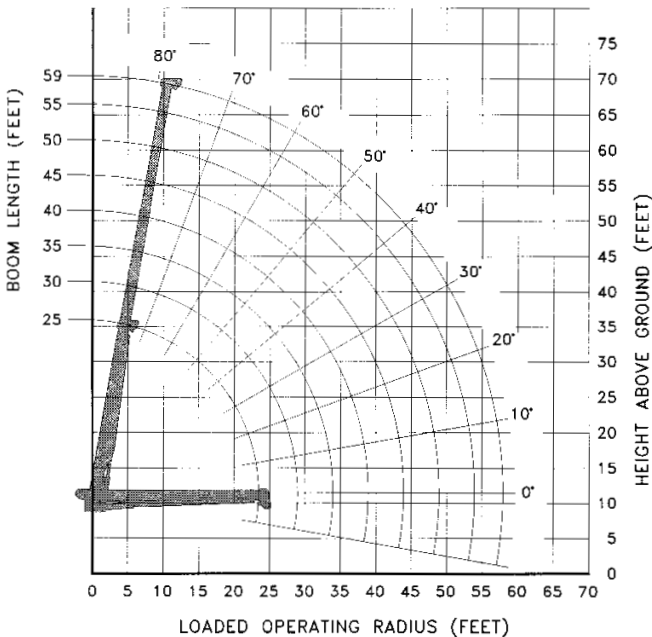
- Hydra-Limit overload protection system
- Two speed planetary winch
- Fixed swing around jib, stows along side of boom
- Snatch blocks and crane blocks for multi-part line operation

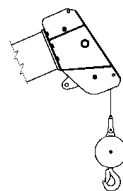
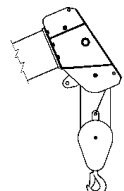
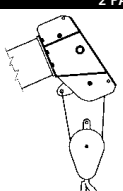
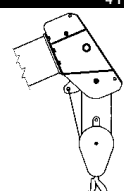


# LOAD CHARTS AND SPECIFICATIONS

MAXIMUM RATED LOAD IN LBS WITH OUTRIGGERS FULLY EXTENDED										
LOAD RADIUS	LOADED BOOM ANGLE	RETRACTED BOOM LENGTH	LOADED BOOM ANGLE	BOOM LENGTH	LOADED BOOM ANGLE	BOOM LENGTH	LOADED BOOM ANGLE	BOOM LENGTH	LOADED BOOM ANGLE	BOOM LENGTH
FEET	< °	25 FEET	< °	35 FEET	< °	45 FEET	< °	55 FEET	< °	59 FEET
5	80	30,000								
8	73	21,700	78	20,200						
10	68	18,000	74	16,500	78	15,700	80	14,400		
12	62	15,500	71	14,400	76	13,600	78	13,100	79	12,950
14	56	14,000	68	12,500	73	11,750	76	11,250	77	11,100
16	50	12,500	64	11,150	70	10,400	74	9,850	75	9,750
18	43	11,350	60	10,000	67	9,300	72	8,800	73	8,650
20	34	10,300	56	9,200	64	8,450	70	7,950	71	7,800
25			45	7,550	58	7,150	64	6,700	66	6,550
30			32	6,450	50	6,000	58	5,600	60	5,450
35					40	5,150	52	4,800	55	4,650
40					28	4,350	45	4,150	48	4,050
45							36	3,600	41	3,550
50							25	3,100	32	3,100
55									20	2,650
60										

**NOTE:** Deductions above the heavy line are based on structural competence and not on machine stability. Deductions must be made from the rated loads for lifting accessories: overhaul balls, load hooks, snatch blocks and load blocks.



<p style="text-align: center;"><b>1 PART LINE</b></p>  <p style="text-align: center;"><b>Maximum Loads</b> 9/16" Cable 7,500 lbs 5/8" Cable 8,700 lbs</p>	<p style="text-align: center;"><b>3 PART LINE</b></p>  <p style="text-align: center;"><b>Maximum Loads</b> 9/16" Cable 22,500 lbs 5/8" Cable 26,100 lbs</p>
<p style="text-align: center;"><b>2 PART LINE</b></p>  <p style="text-align: center;"><b>Maximum Loads</b> 9/16" Cable 15,000 lbs 5/8" Cable 17,400 lbs</p>	<p style="text-align: center;"><b>4 PART LINE</b></p>  <p style="text-align: center;"><b>Maximum Loads</b> 9/16" Cable 30,000 lbs 5/8" Cable 34,800 lbs</p>